

# LEGO® Digital Designer 4.3 User Manual

The [Readme file](#) contains system requirements and the latest information about this software release. Please refer to it first if you encounter any problems.

## Contents

Welcome screen

- LEGO® Digital Designer

- LEGO® MINDSTORMS

- LEGO® Digital Designer EXTENDED

Mouse Controls

Camera control

- Rotate view

- Zoom view

- Reset view

- Pan view

The Icon bar

Preferences

The 3 modes

1. Build mode

- Building tools

- Contextual toolbars:

- Using the Hinge tool:

- Using the Hinge Align tool:

How to copy and paste (Ctrl+C/Cmd+C and Ctrl+V/Cmd-V)

Building palette

- 1. The Brick palette

- 2. Grouping palette

- 3. Template palette

2. View mode

3. Building Guide mode

Import/Export models

Keyboard shortcuts

## Welcome screen

Each time you open LEGO® Digital Designer or start a new model, you'll see the Welcome Screen. Click to choose from the following themes:

### LEGO® Digital Designer

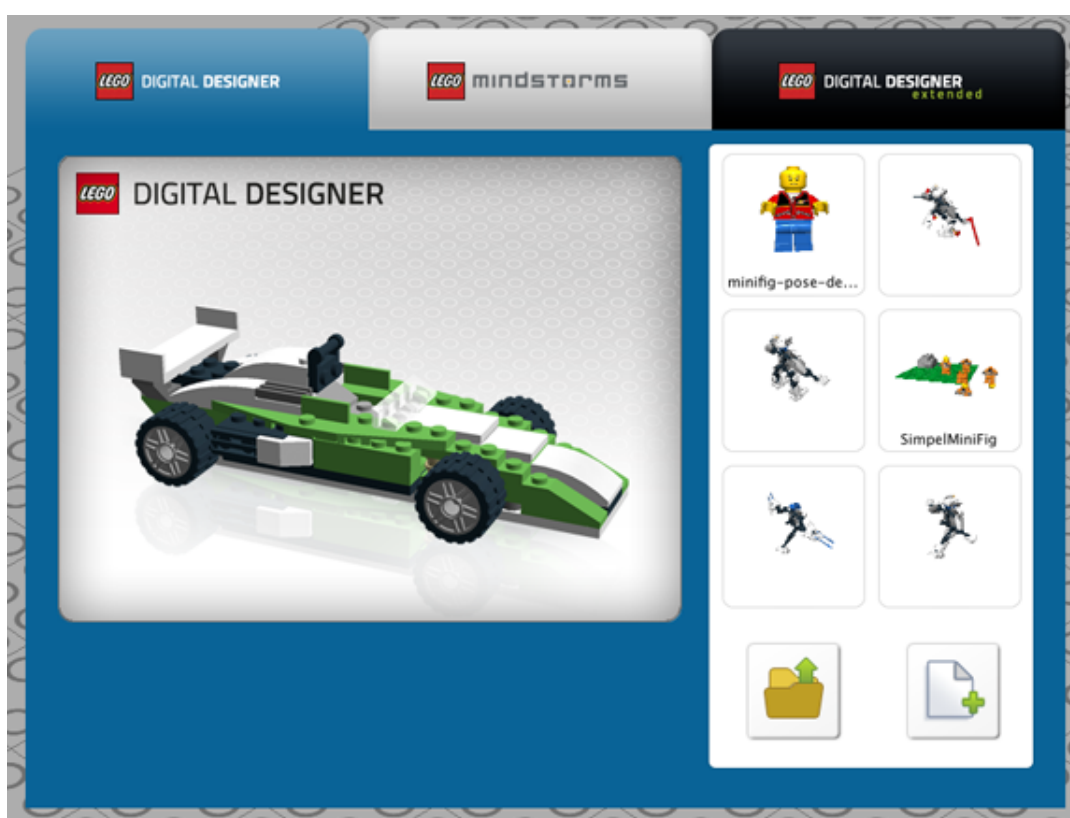
Build your dream model from a huge selection of bricks.

### LEGO® MINDSTORMS®

Work with all the bricks from the unique robot set.

### LEGO® Digital Designer EXTENDED

Choose the LDD EXTENDED theme if you want to mix bricks and colors without limitations.



## Mouse Controls

Here's what you can do with the buttons on your mouse:

### Left mouse button

Click on a brick to select it.

Click and drag to move a brick around on the scene.

### Right mouse button

Click and hold to rotate the scene's camera view.

### Mouse wheel scroll

Use your scroll wheel to zoom in and out in the scene.

## Camera control

The Camera control lets you rotate a model and zoom in and out, so you can see your model from different angles and in different sizes.



### Rotate view

(Num Lock, numbers 8, 2, 4, 6). You can rotate the camera view using either the buttons on the Camera control or your keyboard.



### Zoom view

(Num Lock, + and - keys). Select the + and - keys on your keyboard or the + and - buttons on the Camera control to zoom in or out.



### Reset view

(Num Lock, number 5). Click Reset to return the viewpoint to its standard position, with all bricks and models visible and centered on the scene.

### Pan view (shortcut only)

(Shift+right click). Hold down the Shift key and click the right mouse button to pan your model from the left, right, top or bottom.



## The Icon bar



**Welcome screen** (Ctrl+N/Cmd+N). Open a new document with a blank scene.



**Save** (Ctrl+S/Cmd+S). Save the model on the scene to your hard drive.



**Undo** (Ctrl+Z/Cmd+Z). Take one step back to undo your last action.



**Redo** (Shft+Ctrl+Z/Shft+Cmd+Z). Take one step forward to redo your last undone action.



**Upload to Gallery** (Shft+Ctrl+B/Shft+Cmd+B). Submit your model to one of the online galleries on LEGO.com.



**Screenshot** (Ctrl+K/Cmd+K). Save an image of your model as it appears on the screen to your LEGO® Digital Designer folder.



**Explode** (Ctrl+U/Cmd+U). Blast your model to pieces and watch it rebuild itself.



**Backgrounds** (Ctrl+F/Cmd+F). Change the background behind your model.



**Output as HTML** (Ctrl+H/Cmd+T). View your building guide as a printable HTML page.

## Preferences

Shortcut: (Ctrl+6/Cmd+.). On a PC, select Edit from the menu bar and then select Preferences. On a Mac, select LEGO®; Digital Designer from the menu bar and then select Preferences. You can use the preference window to turn features on and off. Your changes will be saved when you restart LEGO®; Digital Designer.

**Show information field** Adds the information field to the bottom of the screen containing information about the bricks you have selected or the bricks in the scene

**Show tooltips** Adds yellow labels next to the mouse-cursor. These explains how the different buttons work

### Enable sound in the application

**“Keys for turning” shown along with cursor** A keyboard icon is shown on the cursor to indicate rotation

**Repeat inserting selected bricks** Last chosen brick is stuck to the cursor and get left clicking, places a new copy.

Enables the dialogues for that warn you about nonbuyable elements.

### **Brick count: Show the number of bricks in a box**

**Invert camera X-axis: invert the cameras movement with respect to the X (left/right) mouse axis**

**Invert camera Y-axis: invert the cameras movement with respect to the Y (up/down) mouse axis**

### **Brick count: Show the number of bricks in a box**

**High-quality rendering of bricks placed in scene** Makes your model look better.

**High-quality rendering of bricks in the Brick palette** Makes bricks in the palette look better.

**Outlines on bricks** Enable to see the edges on all the bricks in the scene.

**Advanced shading** Enables advanced shading that makes your model look more realistic

**Choose language** Select the language of your choice

**Compatibility mode** Only use this if you have trouble running LDD

**Reset preferences** Reset to preferences to default

## **The 3 modes**

[Back to top](#)



**LEGO® Digital Designer has three operation modes:**

1. Build mode
2. View mode
3. Building guide mode

You can switch between modes by clicking one of the three mode icons located in the bar at the top of the application.

## **1. Build mode**

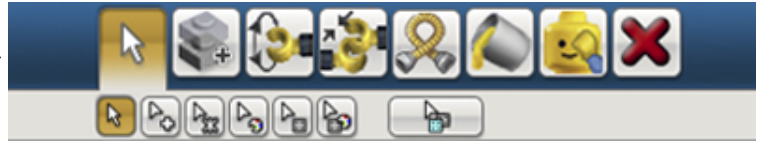
[Back to top](#)



**Build mode** (F5 key). Click Build to enter Build mode, where you can build and edit your model and scene.

## Building tools

The Building tools are only available in Build mode. Use these tools to select, move, clone, color and rotate your bricks.



**Selection tool** (V key). Use the Selection tool to select single bricks in the scene. Click the Selection tool button to reveal a panel containing Advanced Selection tools (use Shft+V to switch between the different tools).



**Advanced Selection tools** (Shft+V to toggle between tools). Click the Selection tool to display the Advanced Selection tools panel. Advanced Selection tools let you select multiple bricks and make selections based on brick color, shape and connectivity.



**Clone tool** (C key). Use the Clone tool to make duplicates of bricks in the scene.



**Hinge tool** (H key). Use the Hinge tool to rotate bricks that are connected with a hinge or a single-stud connection.



**Pitch, Roll and Yaw angle entry fields** The pitch, roll and yaw angle entry fields allow precise rotation of a joint/hinge within its defined limits.



**Hinge Align tool** (Shft+H key). Use the Hinge Align tool to automatically connect two separate connection points.



**Flex tool** (F key). Use the Flex tool to bend and twist flexible elements (indicated by a small icon in the brick preview).



**Paint tool** (B key). Use the Paint tool to change the color or material of bricks in the scene.



**LEGO EXTENDED Paint tool** (B key). In the EXTENDED theme, you can freely pick any LEGO color and apply it to any brick you want.



**LEGO EXTENDED Color Palette selection tool** Displays a palette of LEGO colors divided into solid, transparent, metallic and legacy. (EXTENDED theme only)



**Color Picker** Allows you to pick up colors by selecting bricks. (only in the EXTENDED theme)



**Decoration tool** Let you add decorations to surfaces of selected bricks. (only in the EXTENDED theme)



**Hide tool** (L key). Use the Hide tool to hide bricks or models.




**Delete tool** (D key). Use the Delete tool to remove bricks from scene.



### Using the Hinge tool:

The Hinge tool lets you select a hinged element on your model and move it in the directions

 The Hinge tool lets you select a hinged element on your model and move it in the directions indicated by the arrows. A selected element can be moved using your mouse or the arrow keys on your keyboard. When an element can be rotated in multiple directions, the selected direction is indicated with a green arrow. To select a different direction, click one of the yellow arrows or use the TAB key on your keyboard.



**The Hinge wheel** also lets you rotate in a circular motion and snap the rotation to 45-degree increments.

**The Numeric Input field** lets you manually input angle values.



### Using the Hinge Align tool:

The Hinge Align tool makes it easier to work with Technic elements in particular. Select the two endpoints of a chain of beams and watch them connect.

## Contextual toolbars



Contextual toolbars lie directly beneath main toolbars and contain special sub-tools for each tool. For example, the Contextual toolbar beneath the Hinge tool offers an input field, while the Contextual toolbar beneath the Paint tool contains a number of useful sub-tools.

## How to copy and paste (Ctrl+C/Cmd+C and Ctrl+V/Cmd-V)

Sometimes you might want to take existing bricks and duplicate them by copying a selection.

**Copy**(Ctrl+C/Cmd+C). You can copy part of your model by selecting the bricks you'd like to copy and pressing Ctrl-C/Cmd-C.

**Paste**(Ctrl+V/Cmd+V). You can now paste your bricks by pressing Ctrl+V/Cmd+V and place them wherever you like on the scene.



Note: Copy and Paste are also available via the Edit menu.

## Building palette

[Back to top](#)

Each time you start building a model in LEGO® Digital Designer, you will see a building palette. The building palette features three tabs:

1. Brick palette: Contains bricks for building
2. Group palette: Contains groups of bricks you have created



- 2. Group palette: Contains groups of bricks you have created
- 3. Template palette: Contains templates you have created

## 1. The Brick palette

The Brick palette gives you access to an unlimited number of bricks you can build with.



### Select a brick to build with.

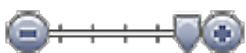
Choose and click on the brick you want to use. The brick will become transparent so you can see where you are moving it. Move the brick to where you want it on the scene and click again.



**Show group/Hide group.** Shows or hides bricks in the group within the palette.



**Filter Bricks by LEGO® sets.** Click this icon to choose a LEGO® set. Your brick list will display only the bricks contained in the selected set. Each brick appears with a number that tells you how many of each brick the set contains. It will count down to zero as you use the bricks. If you use too many of one brick (more than the LEGO® set contains) the number will turn red. The red number tells you how many extra bricks you have used that are not included in the set.

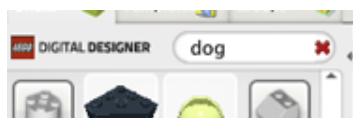
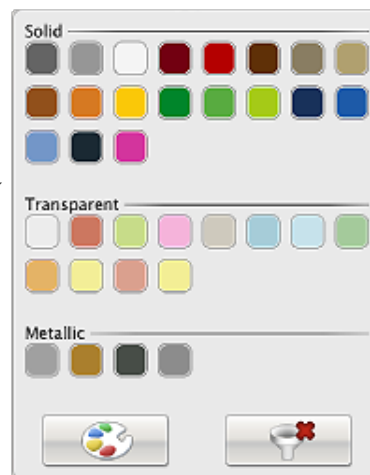


**Scale dividers.** Resizes the dividers and their contents to better fit your screen resolution.



**Find bricks by color.** When you click this icon, a panel will open below the icon. Select the color or material you are

looking for. This will filter the brick list so it only shows bricks in the color you have selected. This palette also lets you **Hide colors** and only show grey bricks so you can concentrate on the shapes. You can remove any choices you have made in this menu by clicking **Remove filter**.



**Search field.** Search for the brick you need. Try typing words like 'round', 'roof' or 'dog'.

**LEGO Digital Designer EXTENDED palette** When in the LDD EXTENDED theme, bricks can be colored freely, regardless of their design.

## 2. Grouping palette



Use groups to save a selection of bricks for later use. Groups make it easy for you to access groups of bricks that you often need to select, such as car wheels, rooftops or aircraft wings.



**Create group (Ctrl+G/Cmd+G).** To create a group, first select the bricks you want to group, and then click the Create Group button.





**Add to group.** Use this function to add selected bricks to an existing group.

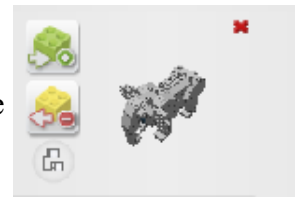


**Remove from group.** Use this function to remove selected bricks from an existing group.



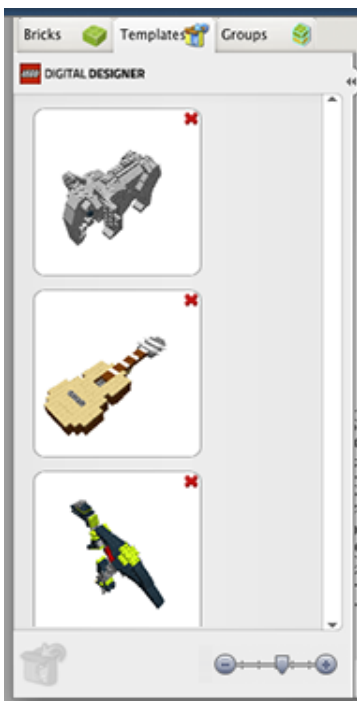
**Create subgroup.** Create a subgroup that belongs under another group. For example, you might want to create a 'Car' group and then a 'Wheels' subgroup under it, so you can select either the whole car or just the wheels.

**Group preview.** Group preview shows you a thumbnail of a group's contents. Try dragging it around by clicking and dragging with your right mouse button. Note: You can always delete groups by clicking the red 'X' in the upper right corner of the group preview.



### 3. Template palette

Templates let you permanently save a group of bricks so that next time you start the program, the templates will still be available.



**Save to Template** (Ctrl+Alt+G/Cmd+Alt+G). Save a selection to a template by first selecting the bricks you want to add, and then clicking this button.



**Template Preview** This shows you a thumbnail view of the contents of a Template. Try dragging it around by clicking and dragging with your right mouse button.

## 2. View mode



**View mode** (F6 key). This mode lets you view your model with different backgrounds. You can also use the explode button to explode your models.



**Take screenshot.** Takes a screenshot and puts it in your 'Pictures' folder in your OS.

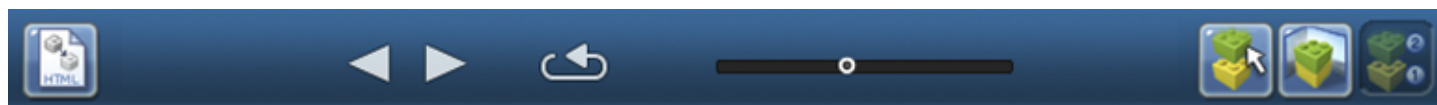


**Explode model.** Explodes your model in to a million pieces.



**Change Background.** Click this to cycle between different background environments.

## 3. Building Guide mode



Building Guide mode gives you access to the Building Guide player, which you can use to play through the different steps in your building guide.



**Next/Previous Step** (Right Arrow key). Go one step forward or backward in the building guide.



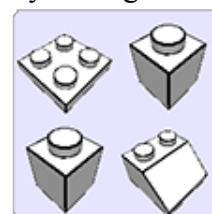
**Repeat Last Step** (Space bar). Play the last step again.



**Step Slider** Drag to jump to a specific step in the building guide.



**Step Counter** Displays your current step number and the total number of steps in your building guide.



**Assembly View** Reveals a preview of your next 4 bricks.

## Import/Export models

**Import.** Import LXF, LXFML and LDraw files into LEGO® Digital Designer. You can import files even if you already have a model open in the scene.

Note: Remember to open your old models using the Import function.

**Export.** Export lets you create LXF, LXFML and LDraw files that can be opened in other applications.

## Keyboard shortcuts

	PC	MAC
<b>Viewpoint controller:</b>		
Rotate view left	4 Key (NumLock: ON)	4 Key (NumLock: ON)
Rotate view right	6 Key (NumLock: ON)	6 Key (NumLock: ON)
Rotate view up	8 Key (NumLock: ON)	8 Key (NumLock: ON)
Rotate view down	2 Key (NumLock: ON)	2 Key (NumLock: ON)
Reset view	5 Key (NumLock: ON)	5 Key (NumLock: ON)
Zoom in	+ Key (NumLock: ON)	+ Key (NumLock: ON)
Zoom out	- Key (NumLock: ON)	- Key (NumLock: ON)

### Building tools:

Select tool	V-Key	V-Key
Toggle Select tools	Shft+V	Shft+V
Hinge tool	H-Key	H-Key
Hinge Align tool	Shft+H	Shft+H
Clone tool	C-Key	C-Key
Paint tool	B-Key	B-Key
Hide tool	L-Key	L-Key
Delete tool	D-Key	D-Key

### Grouping tool:

Create groups	Ctrl+G	Cmd+G
---------------	--------	-------

### Templates:

Create a template	Ctrl+Alt+G	Cmd+Alt+G
-------------------	------------	-----------

### Icon bar:

Open	Ctrl+O	Cmd+O
Save	Ctrl+S	Cmd+S
Print	Ctrl+P	Cmd+P

Undo	Ctrl+Z	Cmd+Z
Redo	Shft+Ctrl+Z	Shft+Cmd+Z
Upload to Gallery	Shft+Ctrl+B	Shft+Cmd+B

**Building Guide controller:**

Next brick	Right arrow	Right arrow
Previous brick	Left arrow	Left arrow
Repeat Last Step	Space	Space
Next step	PageDn	PageDn
Previous step	PageUp	PageUp
Output as HTML	Ctrl+H	Cmd+T

**Menu items:**

Import model	Ctrl+I	Cmd+I
Export model	Ctrl+E	Cmd+E
Save as	Shft+Ctrl+S	Shft+Cmd+S
Exit	Ctrl+Q or Alt+F4	Cmd+Q
Cut	Ctrl+X	Cmd+X
Copy	Ctrl+C	Cmd+C
Paste	Ctrl+V	Cmd+V
Delete	Delete Key	Delete Key
Select All	Ctrl+A	Cmd+A
Help	F1 Key	F1 Key
What is this?	F2 Key	F2 Key
About	F3 Key	F3 Key
Preferences	Ctrl+6	Cmd+,
Show/Hide Brick Palette	Ctrl+1	Cmd+1
Show/Hide Tool Palette	Ctrl+2	Cmd+2
Show/Hide Web Browser	Ctrl+3	Cmd+3

Note: Mac shortcuts can vary depending on your country.